

DT-1

WOVEN MESH

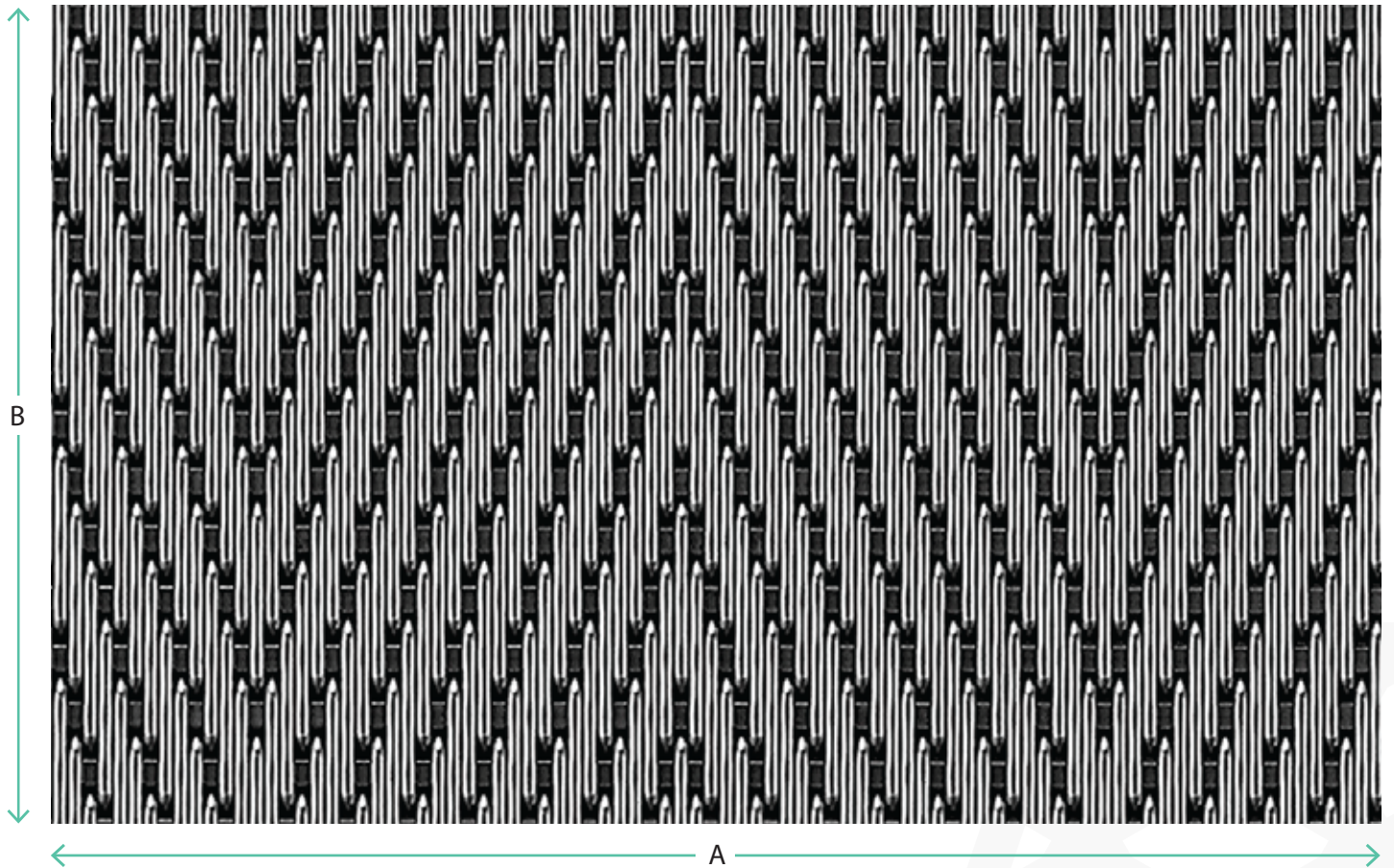


Image not to scale

Maximum Sheet Size	Raw Material: 3000mm (A) x 1500mm (B) Decorative Plating: 2400mm (A) x 1000mm (B) Bespoke to your sizes
Overall Thickness	4.8mm
Weight	16.6kg / m ²
Opening Limitation	0mm
Open Area	0%

Material	Secondary Finish
Stainless Steel	Powder Coat, PVD
Mild Steel	Powder Coat, Decorative Plating
Stainless Steel / Brass	US10A
Stainless Steel / Bronze	US10A

Measurements and data are approximate and should be confirmed with a physical sample. If you are unsure if you are selecting the right mesh for your application please contact the technical team for more information