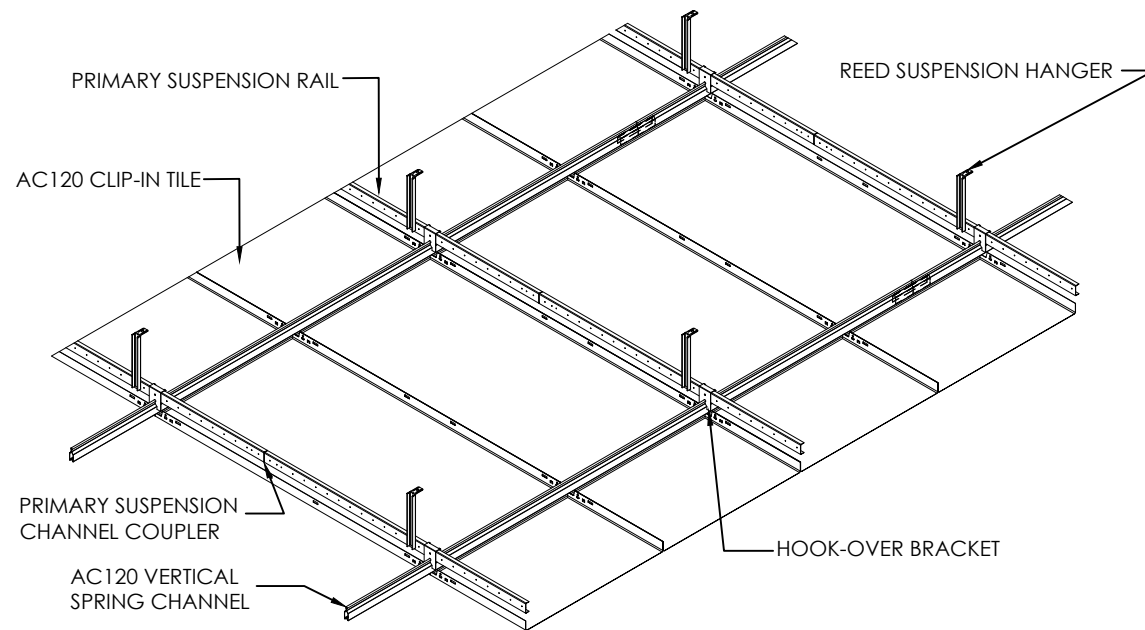
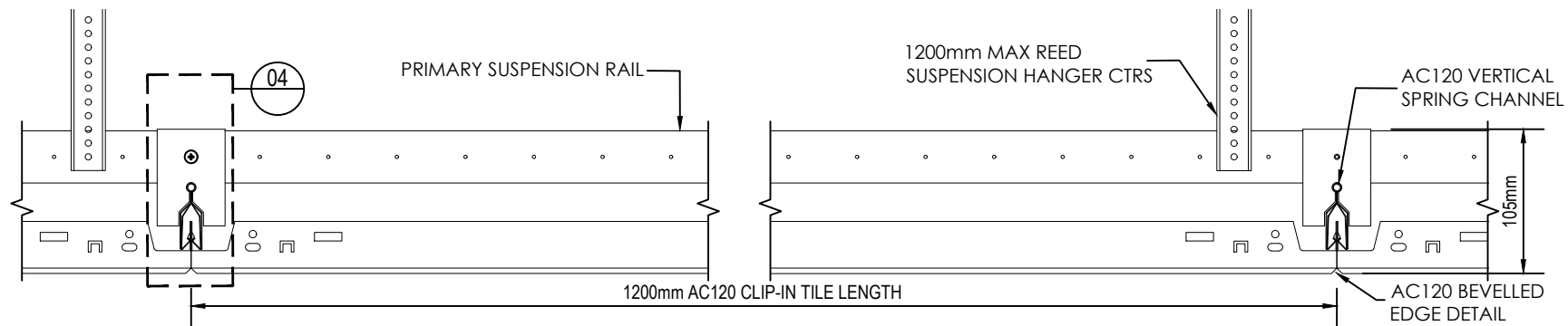


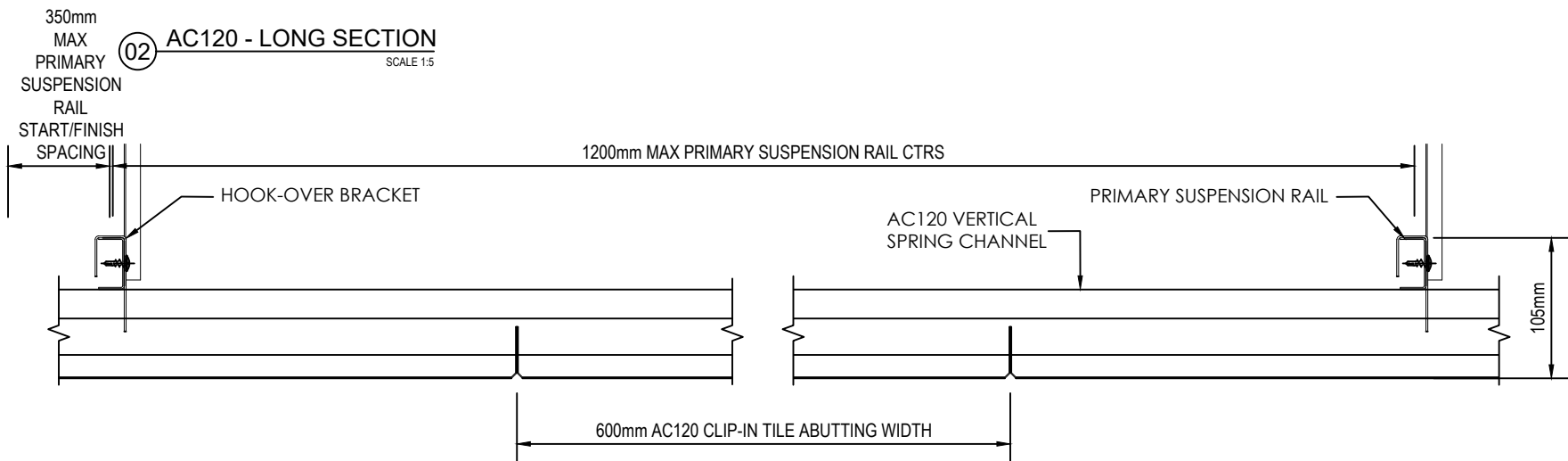
01 AC120 - RCP VIEW
SCALE 1:30



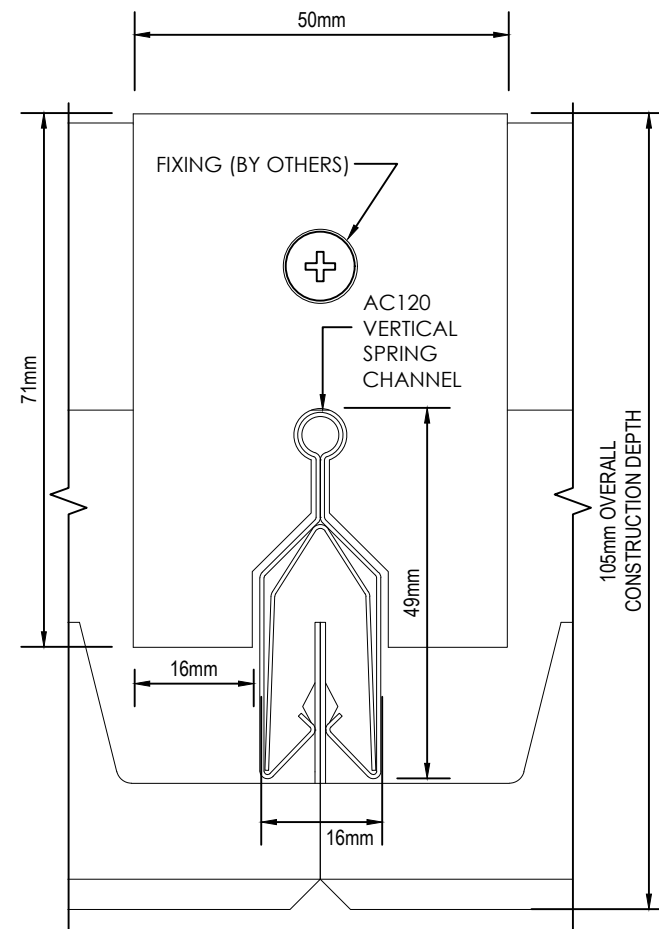
01 AC120 - ISOMETRIC VIEW
NTS



02 AC120 - LONG SECTION
SCALE 1:5



03 AC120 - CROSS SECTION
SCALE 1:5



04 AC120 - ENLARGED DETAIL
SCALE 1:1

Notes:

1. THE COPYRIGHT OF THIS DRAWING IS VESTED IN AMRON ARCHITECTURAL LIMITED AND IT MAY NOT BE REPRODUCED IN WHOLE OR PART OR USED FOR THE MANUFACTURE OF ANY ARTICLE WITHOUT THE EXPRESS PERMISSION OF THE COPYRIGHT HOLDERS.
2. WORK TO FIGURED DIMENSIONS ONLY.
3. THIS DRAWING IS TO BE READ IN CONJUNCTION WITH ALL RELEVANT ARCHITECTS, SERVICE ENGINEERS AND AMRON DRAWINGS AND SPECIFICATIONS.

TOLERANCE UNLESS STATED ±1mm ALL DIMS IN MM

DO NOT SCALE

DETAILS:

NOTES

- MATERIAL (TILE): STEEL OR ALUMINIUM
- MATERIAL (GRID): STEEL OR ALUMINIUM
- OTHER MODULE SIZES AVAILABLE ON REQUEST
- REFER TO METAL PATTERN TYPES BROCHURE FOR OPTIONS
- REFER TO ACOUSTICS BROCHURE FOR OPTIONS
- REFER TO FINISHES BROCHURE OR CONTACT AMRON FOR CUSTOM PAINT OPTIONS

SPECIFICATION GUIDE (STANDARD)

SYSTEM	AC120
MODULE LENGTH	1200
MODULE WIDTH	600
PERFORATION	D1622
FINISH	RAL 9010 20% GLOSS
ACOUSTICS	BLACK FLEECE INFILL

REV:	DESCRIPTION:	BY:	DATE:
	WORK NORM		



Amron Architectural Limited,
9-10 The Foundry Business Park,
Seager Road,
Faversham,
Kent, ME13 7FD
+44 (0)1795 228 583
www.amronarchitectural.co.uk

TITLE:
AC120 1200 x 600 Module
Typical Detail

CAD LOCATION & NAME: Technical/Work Norms			
SCALE AT A3: As Shown	DATE: 04.07.25	DRAWN: NB	CHECKED: WF
PROJECT NO: WORK NORM	DRAWING NO: AC120/001	REVISION: P0	